

PINELLAS COUNTY EVACUATION ZONE MAP

- Recommended or mandatory evacuation?
- Find your evacuation zone



RECOMMENDED OR MANDATORY EVACUATION?

Recommended Evacuation: If a tropical storm is approaching or a hurricane is expected to cross Florida and exit over Pinellas County, the danger from storm surge may be lower. Emergency managers may recommend residents in mobile homes or flood prone areas evacuate to higher ground or sturdier shelter.

Mandatory Evacuation: The probability of storm surge is high and could be deadly for residents who don't leave. It is **illegal** to stay in a home under a mandatory evacuation order. Mobile homes must always evacuate during a mandatory order and all residents should pay attention to which letter zone is being ordered to leave.

WAYS TO FIND YOUR EVACUATION ZONE

High winds, heavy rains or possible tornadoes are not the deadliest hazard during a hurricane. The deadliest hazard is the storm surge – a dome of water pushed ashore by high winds. In a worst case scenario, this can mean a surge of 29 feet above the normal water level, causing tremendous damage and danger of drowning.

While those residents who can see the gulf or the bay have a visual reminder of how vulnerable they are to the water, residents who live miles from these bodies of water can still be vulnerable to storm surge. That's why it's critical to identify your evacuation level and act appropriately should an order go into effect.

Even if you have lived in Pinellas County for a long time, it's more important than ever to check your home's evacuation level.

To find your level:

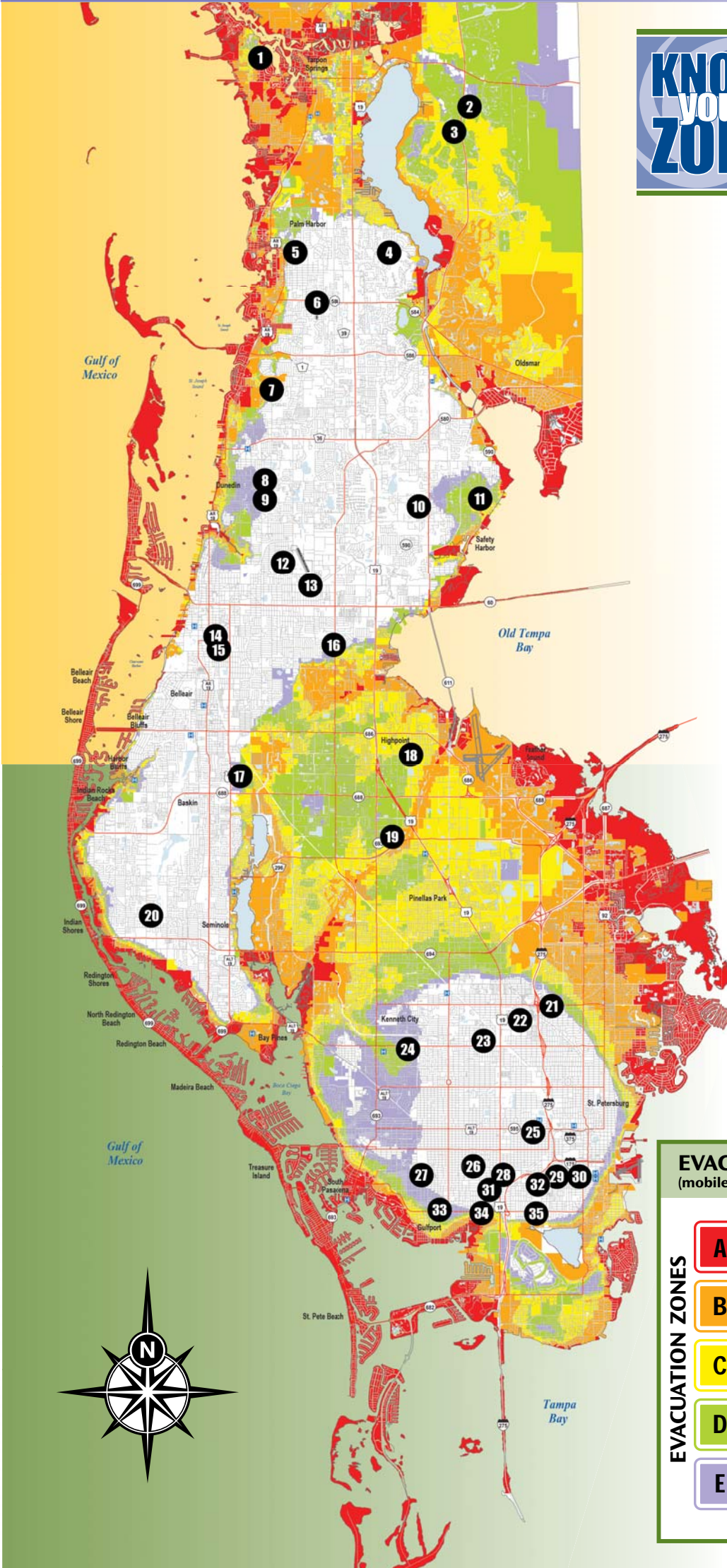


• Visit www.pinellascounty.org/emergency, click on Know Your Zone.

• Look up Know Your Zone on the Pinellas County "Doing Things for You" app.



- Call (727) 453-3150 and enter your 10-digit home phone number (does not work for cell phone numbers).
- Look on your Pinellas County water bill.
- Look on your Truth in Millage (TRIM) notice.
- Call (727) 464-3800 and speak with Emergency Management staff.



EVACUATION GUIDELINES (mobile homes MUST always evacuate)

Potential Surge Heights (in feet)

EVACUATION ZONES	Potential Surge Heights (in feet)	Evacuation Guidelines
A	4' to 8'	Evacuate red areas and all mobile homes
B	8' to 14'	Evacuate red and orange areas and all mobile homes
C	14' to 19'	Evacuate red, orange and yellow areas and all mobile homes
D	19' to 26'	Evacuate red, orange, yellow and green areas and all mobile homes
E	26' to 29'	Evacuate red, orange, yellow, green and purple areas and all mobile homes

Areas shown in white are non-evacuation zones.

SHELTER OPTIONS

in this section

- When to pack
- Where to go
- If you stay home



N

NORTH COUNTY

- 1 Tarpon Springs Middle School**
501 N. Florida Ave. • Tarpon Springs
- 2 Brooker Creek Elementary School**
3130 Forelock Road • Tarpon Springs
- 3 East Lake High School**
1300 Silver Eagle Drive • Tarpon Springs
- 4 Carwise Middle School**
3301 Bentley Drive • Palm Harbor
- 5 Palm Harbor University High School**
1900 Omaha St. • Palm Harbor
- 6 Palm Harbor Middle School**
1800 Tampa Road • Palm Harbor
- 7 Dunedin Community Center**
1920 Pinehurst Road • Dunedin
- 8 Dunedin Highland Middle School**
70 Patricia Ave. • Dunedin
- 9 Dunedin Elementary School**
900 Union St. • Dunedin
- 10 McMullen-Booth Elementary School**
3025 Union St. • Clearwater
- 11 Safety Harbor Middle School**
901 First Ave. N. • Safety Harbor
- 12 Clearwater Fundamental Middle School**
1660 Palmetto St. • Clearwater
- 13 Skycrest Elementary School**
10 N. Corona Ave. • Clearwater
- 14 Belleair Elementary School**
1156 Lakeview Road • Clearwater
- 15 Ross Norton Recreation Center**
1426 S. MLK Jr. Ave. • Clearwater
- 16 Oak Grove Middle School**
1370 S. Belcher Road • Clearwater

S

SOUTH COUNTY

- 17 Largo High School**
410 Missouri Ave. N. • Largo
- 18 High Point Elementary School**
5921 150th Ave. N. • Clearwater
- 19 Pinellas Park High School**
6305 118th Ave. N. • Pinellas Park
- 20 Bauder Elementary School**
12755 86th Ave. N. • Seminole
- 21 John Sexton Elementary School**
1997 54th Ave. N. • St. Petersburg
- 22 Lealman Intermediate School**
4900 28th St. N. • St. Petersburg
- 23 New Heights Elementary School**
3901 37th St. N. • St. Petersburg
- 24 Northside Baptist Church**
6000 38th Ave. N. • St. Petersburg
- 25 St. Petersburg High School**
2501 Fifth Ave. N. • St. Petersburg
- 26 Fairmount Park Elementary School**
575 41st St. S. • St. Petersburg
- 27 Boca Ciega High School**
924 58th St. S. • Gulfport
- 28 Gibbs High School**
850 34th St. S. • St. Petersburg
- 29 John Hopkins Middle School**
701 16th St. S. • St. Petersburg
- 30 Campbell Park Elementary School**
1051 Seventh Ave. S. • St. Petersburg
- 31 Jamerson Elementary School**
1200 37th St. S. • St. Petersburg
- 32 St. Petersburg College Midtown Campus**
1300 22nd St. S. • St. Petersburg
- 33 Gulfport Elementary School**
2014 52nd St. S. • Gulfport
- 34 Thurgood Marshall Middle School**
3901 22nd Ave. S. • St. Petersburg
- 35 James Sanderlin Elementary School**
2350 22nd Ave. S. • St. Petersburg



Not every shelter will open for every evacuation. Please check www.pinellascounty.org/emergency or call the Citizens Information Center at (727) 464-4333 or TDD (727) 464-3075.

Follow these steps to determine whether it's safe to stay home or if you need to find a secure place to go:



PACK YOUR BAGS IF...

- You live in a mobile or manufactured home.
- You live in an evacuation zone.
- You have special medical needs or need help evacuating.

SPECIAL NEEDS – REGISTER NOW

- Call Emergency Management at (727) 464-3800, your local fire department or your home healthcare provider.
- Register online www.pinellascounty.org/emergency.
- For more details, see page 12.

WHERE CAN YOU GO?

HOST HOME – A safe, secure home in a zone not being ordered to evacuate.

HOTEL – Identify hotels in a zone not being ordered to evacuate. Book early!

LEAVE – Make sure your vehicle is ready for a long ride with traffic. Also, remember the storm could change paths and still put you in harm's way in another part of the state.



LAST RESORT: PUBLIC SHELTER –

Expect crowded quarters with few comforts at shelters located in local schools or church buildings. Pinellas County has limited shelter space so this should be your last resort.

Do you have a pet? See page 13.

Do you need public transportation? See page 4.

DO YOU HAVE A HOST HOME?

A Category 3 hurricane would drive about 391,000 people from their homes, but the county currently has approximately 61,000 public shelter spaces so alternative options are needed. While many people may stay at a safe hotel or relative's house or even leave the county, others – especially the elderly and pet owners – need a local place to stay. Groups that provide Host Homes can help.

Do you or the social groups you participate in have a safe home or building that's outside the evacuation zone? Would you be willing to open that space for individuals and families that need a secure space to ride out a storm? Consider organizing a group Host Home program.

Host Homes is not a government program; it's a voluntary program for employers, places of worship or civic organizations that want to help their own employees or members. Keeping the host-guest matches within the organization takes away anxiety associated with helping strangers. It also allows the group the freedom to run the program according to the needs of its members. Learn about organizing a Host Home at www.pinellascounty.org/emergency/hosthomes.htm.



IF YOU STAY HOME...

Make sure your home is safe and your family is prepared.



Consider:

- Survival kit
- Battery-operated radio with extra batteries
- Hurricane shutters
- Garage door braced
- A safe room inside the house – ground floor interior room with no windows
- Plastic tarps for leaks

For more information on preparing your home, see page 14.